



Wood Slice Painting

Paint a wood slice with a night-time summer camping scene with this kit, then hang with twine. Follow our template picture or create your own.



Ingredients (Included):

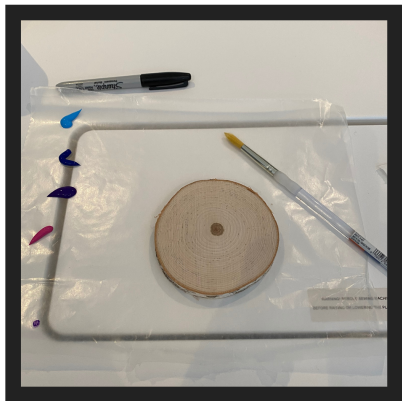
- Wood slice, round
- Paint: dark blue, light blue, purple, pink, and white
- 2 paintbrushes
- Sharpie

You Supply:

- Paint tray, optional
- Varnish/sealer, optional (we recommend DecoArt DuraClear Gloss Varnish)

Directions:

Optional First Step: You can put a little of each color onto a paint tray (anything works, like a paper plate or a piece of wax paper), and work from there if you don't want to dip your brush directly into the paint pots. We'll be mixing directly on the wood slice and it's possible that some of the paint pots could get cross contaminated with other colors.



We're going to start with a straight across horizon line separating the landscape from the sky. We'll do the sky first and add trees and a tent to the landscape later.

Start with the light blue paint and drag a line across the wood slice. This is where the bottom of the horizon line will be. The area below this line will be where the landscape is added in.



Continue painting with the light blue paint above the horizon line until you have a decent amount.

I like the look of having a little space between where the paint is and the edge of the wood slice, but you can bring the paint all the way to the edge if you want. (You can see I did this eventually because I couldn't keep the edges even enough to make me happy.)

Without cleaning off your brush or letting the paint dry, pick up some of the dark blue and add it above the light blue, blending where the two colors meet with little horizontal strokes back and forth. Continue working on your gradient between the blues, adding more dark blue as necessary.



Now we'll take the third color, the purple, and continue building up in the sky. Blend in the purple in just the same way as you did the dark blue.

If it seems like you have too much paint on your brush so it isn't blending as well on the wood slice, you can wipe the paintbrush on a paper towel to get rid of the excess.

Finally, we'll do the pink color at the very top, and blend it in a little with the purple around it.

Once you're done with the sky, let it sit for at least 15 minutes to dry fully. If you touch the paint gently with your fingers and it's tacky, then wait longer.

Now we'll go in with our Sharpie and make the pine trees at the horizon line. First, draw a black line at the horizon.



Then draw some straight lines moving up from the horizon to form the trunks of the trees.

Then working from the top of each tree, move your pen back and forth in a loose squiggle, with small strokes at the top and getting wider as you go down, forming the triangular shape of a pine tree. Practice on paper first.

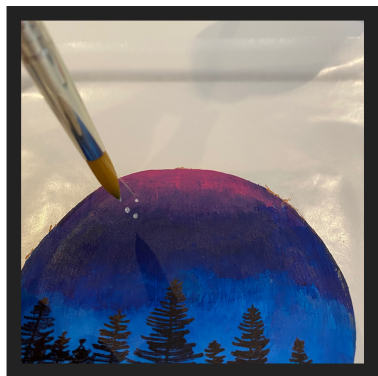
You can draw anything you want on the landscape. I drew a simple camping tent and a pine tree and put in some dots for grass.

I recommend sketching lightly in pencil first to make sure of the placement and drawing before inking it. I didn't, and my tent looks a bit wonky to me.

Make sure the Sharpie and paint is dry before moving on to the next step, the stars.



Using the white paint and the small paintbrush, pick up a small amount of the white paint and use it to dot stars in the sky. Hold your paintbrush loosely and tap the brush to the sky to make sure the stars aren't too big (unless you want them to be!). You can also use a toothpick.



Optional Final Step: If you want to seal your wood slice, wait 24 hours to be sure it's all dry. Brush on your varnish with even strokes and a clean brush, or use a spray sealer, and wait 2-3 hours for that to dry before hanging.



Finally, thread your twine through the hole and tie a knot at the top to make a loop for hanging your ornament. My sample piece didn't come with a hole, but yours does!

Have questions or comments about our Teen Take & Makes? Email me at khutley@wilmettelibrary.info

Proud of your final project? Post a picture and tag [@wilmettelibraryteens](https://www.instagram.com/wilmettelibraryteens) on Instagram!